

**AIM AND TERMS OF USE:** The aim of EUR Pallets Assessment Cards is to help all parties involved in EUR pallets exchange to recognize proper/legal EUR pallets and to assess their minimum quality requirements for further exchange or expelling from open circulation for recycling or repair.

**LEGAL DISCLAIMER:** In no case ECR Baltic can be held liable for any claim raised on use or misuse of Baltic EUR Pallets Assessment Cards by 3rd parties. The cards were developed based on standards described in UIC 435 Codex, EPAL recommendations, most frequently recognized pallet damages, local and International experience and expertise by ECR Baltic pallets working group equally represented by retail sector and its suppliers in Estonia, Latvia and Lithuania. Many thanks to those who have contributed to development of Baltic EUR pallets assessment cards, especially ECR Poland and EPAL National Committee in Baltic States (association of certified manufacturers and repairers of EUR pallets).

List of certified EUR and/or EPAL manufacturers:  
EPAL license (2014.12.31.):  
Alsenia UAB, Babruna UAB,  
Julisa UAB, Kronus SIA,  
Laypal Palleten SIA, Vigidas Pack UAB, Ramundas GM UAB,  
Pallet Timber Company

Repairers: Padeklu Centras UAB,  
Baltic Pallets UAB, SIA Kronus,  
Metrosystem OU

**CONTACT US:**  
EPAL NK in Baltic States  
T +37061688011  
E info@europallets.lt  
W www.europallets.lt

ECR Baltic  
O: Brivibas Street 149, 8.th floor,  
Riga, LV-1012  
M +371 26546645

E info@ecr-baltic.org  
Skype: ecr.baltic  
W www.ecr-baltic.org

ECR Baltic is an Efficient Consumer Response Initiative in Estonia, Latvia and Lithuania. ECR Baltic is a collaborative retailer-manufacturer platform with a mission "to fulfill consumer wishes better, faster and at less cost". It is a non-profit organization which aims to help retailers and manufacturers in the FMCG sector to drive supply chain efficiencies and deliver business growth and consumer value.



Sponsors, ECR Baltic publications made thanks to



## ECR BALTIC EUR Pallets Assessment Cards (including single brand EUR and EPAL pallets) v 3.0 January 2015

# PALLET ASSESSMENT CARD: EUR Pallet Types

ECR Baltic v3.0 / January 2015



All the EUR (EUR1), EUR2, EUR3, EUR6 pallets are subject to the same assessment criteria, presented in Paller Assessment Cards.

The specifics EUR pallets types are characterized by various dimensions and construction, but they all comply with rigorous norms and are manufactured accordingly to UIC 435 Code.



**EUR Pallet** (800x1200 mm)



**EUR2 Pallet** (1200x1000 mm)



**EUR6 Pallet** (800x600 mm)



EPAL new half pallet type - EUR7  
in production from 2015



**EUR3 Pallet** (1000x1200 mm)

The blocks in EUR pallets can be made of either solid or crumbled wood.

# PALLET ASSESSMENT CARD: EPAL and EUR pallets markings until 31.07.2013

ECR Baltic v3.0 / January 2015



**ECR Poland recommends to use and exchange EPAL and EUR pallets, including those made before August 2013, provided they meet technical and quality criteria specified in UIC-Leaflet 435-2, based on EN 13698-1 norm.**

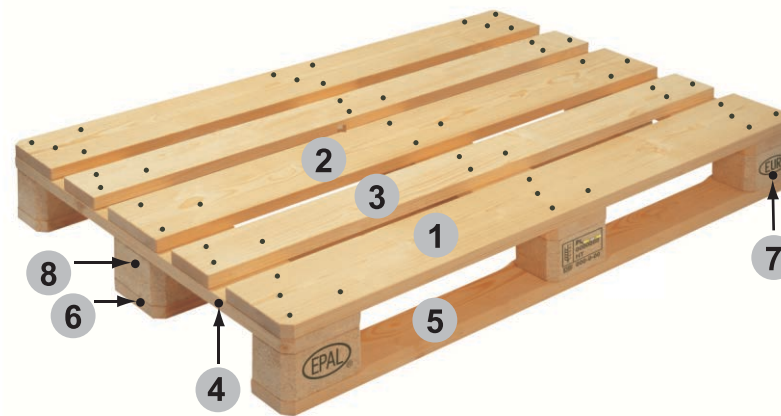
EUR pallets markings (EPAL licence) - till 31.07.2013					
Country	Markings on the blocks			Licence valid	Control staple on new pallets' middle block
	lewy	Middle block	Right block		
Poland *	EPAL	PL-0000 YY DB 000-0-00	EUR	from 05/2004	yes
Lithuania *	EPAL	LT-0000 YY DB 000-0-00	EUR		yes
Latvia *	EPAL	LV-0000 YY DB 000-0-00	EUR		yes
Germany *	EPAL	D-0000 YY DB 000-0-00	EUR	from 01/2005	yes
Turkey *	EPAL	TR-0000 YY DB 000-0-00	EUR		yes
Belgium	EPAL	B B 000-0-00	EUR	from 09/2000	yes
France	EPAL	SNCF F 000-0-00	EUR	from 02/1999	yes
Spain	EPAL	adif ES 000-0-00	EUR	from 10/1999	yes
Ireland	EPAL	BRB IRL 000-0-00	EUR		yes
Portugal	EPAL	CP PT 000-0-00	EUR		yes
Slovenia	EPAL	SZ SI 000-0-00	EUR	from 10/2005	yes
Switzerland	EPAL	SBB CH 000-0-00	EUR		yes
Great Britain	EPAL	BRB GB 000-0-00	EUR		yes
Italy	EPAL	FS I 000-0-00	EUR		yes

These are most commonly found pallets. For the complete list please check [www.epal-pallets.de/uk/produkte/poolbahnen.php](http://www.epal-pallets.de/uk/produkte/poolbahnen.php)

\* ISPM15 phytosanitary treatment marking on the middle block is compulsory from 1.01.2010. Before that date, **middle blocks of EUR pallets manufactured under EPAL licence** had a **DB** marking followed by:



**XX - country of origin symbol:** Austria - A, Belarus - BY or GUS, Bulgaria - B, Denmark - DK, Estonia - EE, Germany - D, Greece - GR, Hungary - H, Latvia - LV, Lithuania - LT, Netherlands - NL, Poland - PL, Romania - RO, Russia - RUS, Slovakia - SK, Turkey - TR, Ukraine - UA.



EUR PALLET - until 31.07.2013

Exact dimensions of pallet boards indicated on features of proper EUR and EPAL pallet card

EUR pallets markings (railway licensed) - until 2013				
Country	Block markings (left)		Licence valid	Control staple on new pallets' middle block
Austria	ÖBB	ÖBB	from 01/2005	yes
Croatia		HŽ		yes, from 2010
Czech Republic		ČD	from 01/1994	yes, from 2010
Denmark		DSB		yes, from 2010
Finland	VR	green cargo	from 01/2009	yes, from 2010
Norway	NSB	green cargo	from 06/2006	yes, from 2010
Slovakia		ZSSK CARGO	from 01/2007	yes, from 2010
Sweden		green cargo	from 01/2001	yes, from 2010
Hungary		MÁV		yes

There are EUR pallets with other markings as well. The list can be found on: [www.epal-pallets.org](http://www.epal-pallets.org), [www.epal.org.pl](http://www.epal.org.pl).

# PALLET ASSESSMENT CARD: features of a proper pallet

ECR Baltic v3.0 / January 2015



**ECR Poland recommends to use and exchange EPAL and EUR pallets, including those made before August 2013, provided they meet technical and quality criteria specified in UIC-Leaflet 435-2, based on EN 13698-1 norm.**

## EPAL pallet (introduced from 1st of August 2013)



## EUR Pallet (UIC marking introduced in second half of 2013)



### EPAL pallets markings (licence from 1.08.2013.) \*

Markings on the blocks:

left	middle	middle, repaired pallet	right	Control staple on middle block:
				compulsory to all new EPAL pallets from 2010



The blocks can be made of either solid or crumbled wood.

PL - example of country of origin symbol,  
AA - region, BBB - Heat Treatment company identification number,  
HT - Heat Treatment

### EUR pallets markings (licence from 08. 2013.) \*

Markings on the blocks:

left	middle	middle, repaired pallet	right	Control staple on middle block:
				compulsory to all new EUR pallets from 2010



The blocks can be made of either solid or crumbled wood.

XX - example of country of origin symbol,  
HT - Heat Treatment,  
OBB - example of licencing railways

\* Pallets manufactured before this date are still good to use, provided they meet the quality criteria. For the markings list see other second page of this Card.

**EPAL pallets and EUR pallets are branded goods and therefore protected by Industrial Property Rights!**

EPAL pallets and EUR pallets standard is defined by UIC-Leaflet 435-2, compliant with EN 13698-1.

#### EPAL pallets and EUR pallets specific features:

- precisely defined dimensions of the pallets and it's elements;
- markings on right and left blocks - specific to each of the types, as specified in the tables above;
- ISPM15 phytosanitary treatment symbol (compulsory as of 1.01.2010);
- alpha-numeric markings on the middle block with following pattern LLL-Y-MM (producer's licence number - year of production - month of production);
- even cuttings of all four corners, at the whole breadth of the pallet.

All EPAL and EUR pallets shall undergo **ISPM15 phytosanitary heat treatment**, confirmed by **IPPC mark** on the middle block. The wood- moisture of new pallet shall not exceed **22%**.

#### On top of that, the EPAL and EUR pallets also:

- have control staple on the middle block (compulsory for new pallets);
- may have repairing nail on the middle block (compulsory for repaired pallets);
- have to be **chamber-dried**.

#### Dimensions of EPAL and EUR wooden pallets:

No.	Element	Number of elements	Dimensions at 22% humidity (tolerance +/- mm)		
			Length	Width	Breadth
1	Utmost top board	2	1200 (+3/-0)	145 (+5/-3)	22 (+2/-0)
2	Middle top board	1	1200 (+3/-0)	145 (+5/-3)	22 (+2/-0)
3	Medium top board	2	1200 (+3/-0)	100 (+3/-3)	22 (+2/-0)
4	Stringer board	3	800 (+3/-0)	145 (+5/-3)	22 (+3/-0)
5	Utmost bottom board	2	1200 (+3/-0)	100 (+3/-3)	22 (+2/-0)
6	Middle bottom board	1	1200 (+3/-0)	145 (+5/-3)	22 (+2/-0)
7	Outer block	6	145 (+5/-3)	100 (+3/-3)	78 (+2/-0)
8	Middle block	3	145 (+5/-3)	145 (+5/-3)	78 (+1/-1)

All dimensions in millimetres, according to UIC-Leaflet 435-2, compliant with EN 13698-1 norm.

# PALLET ASSESSMENT CARD:

## unacceptable flaws

ECR Baltic v3.0 / January 2015



1



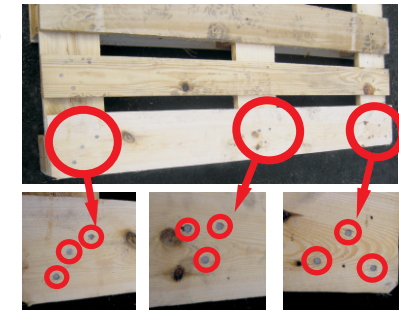
Wanes (chippings) are not allowed on the stringer boards (middle, side).

4



Chipped board, exposing two or more nails.

7



Unlicensed nails or irregular pattern of nailing.

2



No millings on the upper edges of the bottom deck boards.

5



No rotten wood or fungus is allowed at all, Such pallets shall be recycled.

8



It is not permitted to use pallets having their outer boards chipped, provided that the depth of the chipping exceed 2 cm and more than 1 nail is visible

3



Incorrect marking on the blocks

6



Chipped block, exposing any nails exposing any nails.

9



Poor general condition of the pallet:  
- major contamination (e.g. lubricants, grease, cement)  
- use of impermissible elements - boards, bearers, nails  
- improper positioning of the elements, e.g. bearer moved versus boards

**! Pallets with unacceptable flaws shall be repaired (if possible) or recycled !**

# PALLET ASSESSMENT CARD: allowed flaws

ECR Baltic v3.0 / January 2015

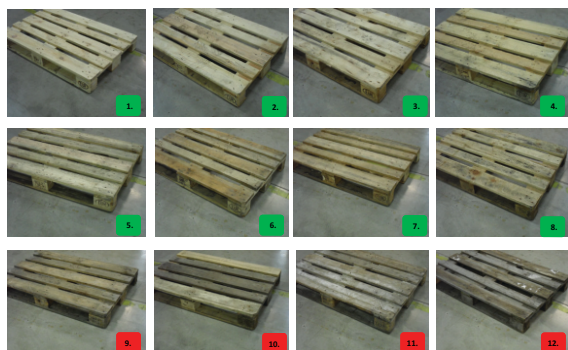


1



Pallet's grey color, a result of the natural wood ageing process, does not affect pallet quality.

Please refer to **Annex 1** for complete set of allowed color samples:



2



It is permitted to use pallets with boards cracked, provided that the crack's edges do not come apart (crack of upper board cannot be longer than width of supporting - crossing stringer board under it).

3



It is permitted to use pallets with a minor bark marking on one edge of the board, as shown on the picture.

4



It is allowed to use pallets with unrecognizable or damaged markings on the block, provided that the parallel block on the other side has all the proper markings.

5



Repaired pallets can be used, the repair is certified by a repairing nail. The wooden elements used for the process shall be new and undergo the fitosanitary treatment.

6



The replaced middle block has no markings but the repairing nail. The replaced right block has "EUR or EPAL with dot" logo, the replaced left logo has "UIC or EPAL with dot" logo (also for non-EPAL pallets repaired before 2013. i.e. CD, MAV, OBB).

7



It is permitted to use pallets with blocks' cracks, provided that no nails are visible.

8



It is permitted to use pallets with stringer board (middle, side) cracked, under the condition, that the stringer board has its entire surface rested on the blocks underneath.

# PALLET ASSESSMENT CARD: allowed flaws: ANNEX 1

ECR Baltic v3.0 / January 2015



1



2



3



4



5



6



7



8



9



10



11



12

**Allowed**

**Not allowed**

3 4 5 6 7 8

9 10 11 12 14 15