

All the EUR (EUR1), EUR2, EUR3, EUR6 pallets are subject to the same assessment criteria, presented in Pallet Assessment Cards.

The specific EUR pallet types are characterized by various dimensions and construction, but they all comply with rigorous norms and are manufactured accordingly to UIC 435 Code.



EUR Pallet (800x1200 mm)



EUR2 Pallet (1200x1000 mm)



EUR6 Pallet (800x600 mm)



New EUR6 pallet type -
undergoing tests



EUR3 Pallet (1000x1200 mm)

The blocks in EUR pallets can be made of either solid or crumbled wood.

PALLET ASSESSMENT CARD: features of a proper EUR Pallet

Version 2.1 in cooperation with LPUF, LPTA and EPAL comments, December 2012



EUR Pallet



EUR Pallet is a branded good and therefore protected by Industrial and Intellectual Property Rights. EUR pallets standards are defined by UIC 435 Code.

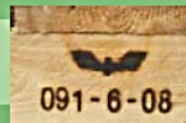
EUR pallets specific features:

- precisely defined dimensions of the pallets and it's elements
- oval EUR logo on the right block
- railway or oval EPAL logo on the left block:
- alpha-numeric markings on the middle block with following pattern LLL-Y-MM (License Number, Year and Month of manufacturing)
- ISPM15 fitosanitary treatment sign (compulsory for all pallets manufactured as of 2010.01.01)
- control staple (compulsory for new pallets produced in the countries mentioned in the samples of EUR pallet markings table on the right side of this card)
- even cuttings of all four corners, at the whole height of the pallet
- the humidity of new EUR pallet shall not exceed 22%.

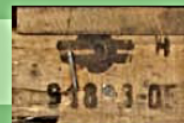
Examples of middle block markings:



EUR EPAL Pallet



EUR Pallet CD (Czech)



EUR Pallet MAV (Hungary)

Dimensions of a EUR1 Pallet

No.	Element	Number of elements	Dimensions at 22% humidity (tolerance +/- mm)		
			Length	Width	Height
1	Ulmost top board	2	1200 (+3/-0)	145 (+5/-3)	22 (+2/-0)
2	Middle top board	1	1200 (+3/-0)	145 (+5/-3)	22 (+2/-0)
3	Medium top board	2	1200 (+3/-0)	100 (+3/-3)	22 (+2/-0)
4	Stringer board	3	800 (+3/-0)	145 (+5/-3)	22 (+3/-0)
5	Ulmost bottom board	2	1200 (+3/-0)	100 (+3/-3)	22 (+2/-0)
6	Middle bottom board	1	1200 (+3/-0)	145 (+5/-3)	22 (+2/-0)
7	Outer block	6	145 (+5/-3)	100 (+3/-3)	78 (+2/-0)
8	Middle block	3	145 (+5/-3)	145 (+5/-3)	78 (+1/-1)

All dimensions in millimeters, according to UIC 435 Code
The blocks in EUR pallets can be made of either solid or crumbed wood

Samples of EUR pallet markings:

EUR Pallets markings (EPAL licensed)				
Country	EPAL markings left block	EPAL markings middle block	Date of the beginning of the licence	Control staple on new pallet's middle block
Poland	EPAL	DB PL 000-0-00	from 05/2004	Yes!
Latvia	EPAL	DB LV 000-0-00		Yes!
Germany	EPAL	DB D 000-0-00	from 01/2005	Yes!
Belgium	EPAL	B B 000-0-00	from 09/2000	Yes!
France	EPAL	SNCF F 000-0-00	from 02/1999	Yes!
Spain	EPAL	adif ES 000-0-00	from 10/1999	Yes!
Ireland	EPAL	BRB IRL 000-0-00		Yes!
Portugal	EPAL	CP PT 000-0-00		Yes!
Slovenia	EPAL	SZ SI 000-0-00	from 10/2005	Yes!
Switzerland	EPAL	SBB CH 000-0-00		Yes!
Great Britain	EPAL	BRB GB 000-0-00		Yes!
Italy	EPAL	FS I 000-0-00		Yes!

Other pallets with EPAL/DB markings: Austria - A, Bulgaria - B, Belarus - BY and GUS, Denmark - DK, Estonia - EE, Greece - GR, Holland - NL, Hungary - H, Lithuania - LT, Latvia - LV, Romania - RO, Russia - RUS, Slovakia - SK, Turkey - TR, Ukraine - UA.

EUR Pallets markings (Railways licensed)				
Country	Railway markings (left or middle block)		Date of the beginning of the licence	Control staple on new pallet's middle block
Austria	ÖBB	ÖBB	from 01/2005	Yes!
Croatia		HŽ		
Czech		ČD	from 01/1994	
Denmark		DSB		
Finland	VR	green cargo	from 01/2009	
Norway	NSB	green cargo	from 06/2006	
Slovakia		ZSSK CARGO	from 01/2007	
Sweden		green cargo	from 01/2001	
Hungary		MAV		Yes!

There are EUR pallets with other markings as well. The valid list can be found on www.epal-pallets.org

PALLET ASSESSMENT CARD:

unacceptable flaws

Version 2.1 in cooperation with LPUF, LPTA and EPAL comments
December 2012



1



Wanes (chippings) are not allowed on the stringer boards (middle, side).

4



Chipped board, exposing 2 or more nails.

7



Inappropriate nails or irregular pattern of nailing.

2



No millings on the upper edges of the bottom deck boards.

5



No rotten wood or fungus is allowed at all. Such pallets shall be recycled.

8



Poor general condition of the pallet:

- major contamination (e.g. lubricants, grease, cement)
- use of impermissible elements – boards, bearers, nails
- improper positioning of the elements, e.g. bearer moved versus boards
- **dark color as a sign of substantial pallet quality loss:**

3



Incorrect marking on the blocks.

6



Chipped block, exposing any nails.



! Pallets with unacceptable flaws shall be repaired (if possible) or recycled !

PALLET ASSESSMENT CARD:

allowed flaws

Version 2.1 in cooperation with LPUF, LPTA and EPAL comments
December 2012



1



Pallet's grey color, a result of the natural wood ageing process, does not affect pallet quality.

4



It is allowed to use pallets with unrecognizable or damaged markings on the block, provided that the parallel block on the other side has all the proper markings.

7



It is permitted to use pallets having their outer boards chipped, provided that the depth of the chipping does not exceed 2 cm and no more than 1 nail is visible.

2



It is permitted to use pallets with boards cracked, provided that the crack's edges do not come apart (crack of **top** board can **be board long and both parts of the board are nailed**).

5



Repaired pallets can be used, **the repair of pallet shall be certified with repairing nail**. The wooden elements used for the process shall be new and undergo fitosanitary treatment.

8



It is permitted to use pallets with blocks' cracks, provided that no nails are visible.

3



It is permitted to use pallets with a minor bark marking on one edge of the board, as shown on the picture.

6



The replaced middle block has no markings but the repairing nail.
Replaced side blocks must have a "spot" next to traditional markings.
(also for non-EPAL pallets e.g. CD, MAV, ÖBB).

9



It is permitted to use pallets with stringer board (middle, side) cracked, under the condition, that the stringer board has its entire surface rested on the blocks underneath.

"EPAL" logos shall be considered as an example!