

# PALLET ASSESSMENT CARD: unacceptable flaws

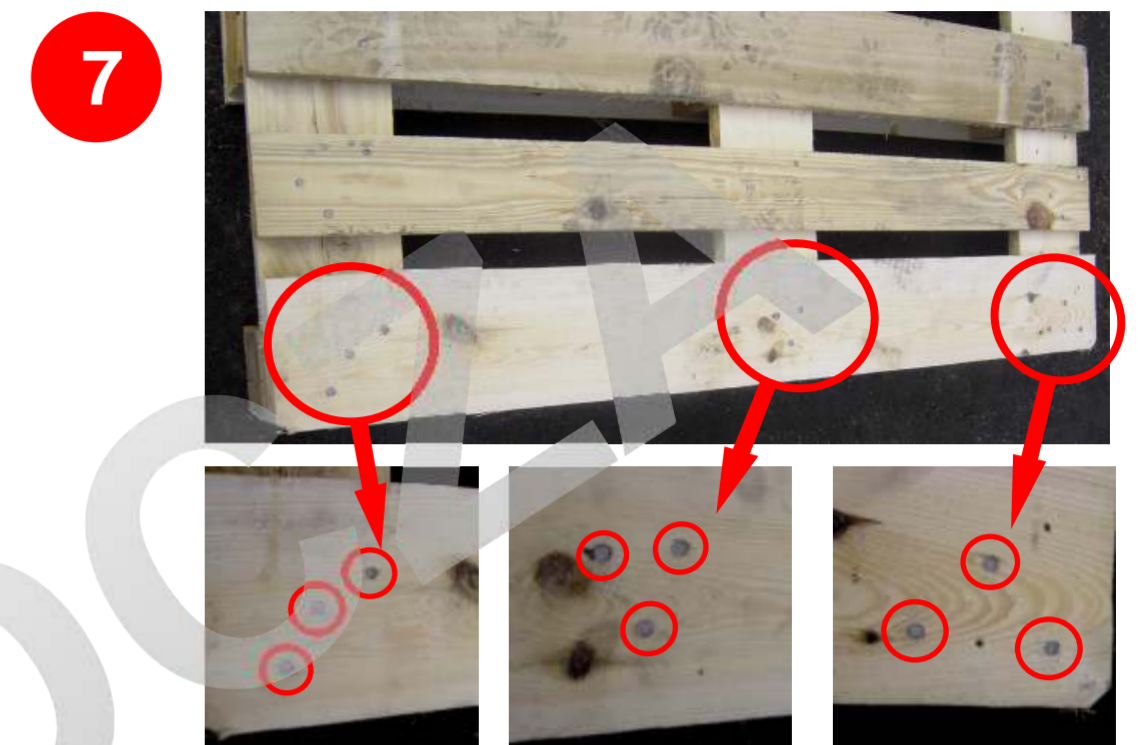
VERSION 4 / February 2012



1 Wanes (chippings) are not allowed on the stringer boards (middle, side).



4 Chipped board, exposing 2 or more nails.



7 Unlicensed nails or irregular pattern of nailing.



2 No millings on the upper edges of the bottomdeck boards.



5 No rotten wood or fungus is allowed at all. Such pallets shall be recycled.



8 Poor general condition of the pallet, eg:  
- major contamination, e.g. lubricants, grease, cement;  
- use of impermissible elements (boards, bearers, nails);  
- improper positioning of the elements, e.g. bearer moved versus boards.



3 Incorrect marking on the blocks.



6 Chipped block, exposing any nails.

**Pallets with unacceptable flaws shall be repaired (if possible) or recycled.**